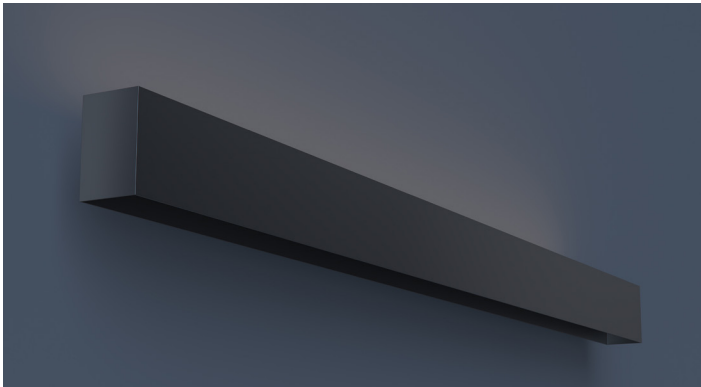




MAGNETO Track System

MAGNETO is an innovative and dynamic track system designed for ease and flexibility. Featuring snap-in magnetic mounting that allows you to rearrange several different modules. Fully customizable to suit your specific needs.

DATE _____ PROJECT _____ FIRM _____ TYPE _____



Linear low voltage configurable track system with the flexibility of magnetically mounted modules for ease of on-site adjustability and install. Configure in patterns or runs to meet design requirements. Complete with optional indirect lighting when suspended. Surface mount available.

FEATURES

- Two Circuits to Power MagNeto Modules
- Optional Additional Uplight Circuit
- CRI 90+ Standard; R9>50
- Available In Made To Measure Lengths Accurate Up To 1/16"
- 90° Corners and Patterns Available (See Page 2)
- Track Circuits Are Dimmable To 1% With 0-10V Controls. Uplight Is 10% Standard

APPLICATIONS Commercial Interiors, Galleries, Retail, Museums, Reception Areas, Hotels, Restaurants

CONSTRUCTION Extruded Housing with Cast End Plates **OPTICS** Optional Uplight with Frosted Lens

WARRANTY 5 Year Limited Warranty (Covers Standard Components) **FINISH** Powder-Coated Black Standard. Optional White Powder-Coated Finish. Custom RAL Colors Available

FIXTURE RATINGS & CERTIFICATIONS Union Made ETL Listed Made In The USA Damp Location Rated



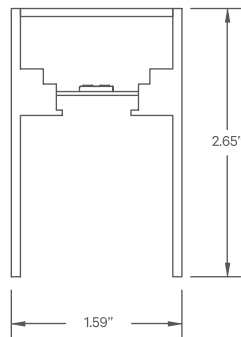
DRIVERS

For Wiring Diagrams [Click Here](#)



ELECTRICAL Uplight and dual circuit track. Remote constant voltage driver with integral 1% 0-10V dimming for track. Remote constant current driver for uplight. 20ft maximum remote driver distance from feed. Track must be re-fed every 30ft or when driver max is reached (whichever comes first).

EXTRUSION DIMENSIONS



LED SYSTEM INFORMATION (FOR OPTIONAL UPLIGHT ONLY)

	Nominal System Watts	Nominal Delivered Lumens
Standard (LTG1)	5.25 W/ft	450 lm/ft
Low (LTG2)	3.5 W/ft	300 lm/ft
High (LTG3)	7.25 W/ft	600 lm/ft

Based on a 3500K luminaire using one driver. Custom outputs available; specify below.

ORDERING 1 2 3 4 5 6 7 8 9 10 11

1 - FIXTURE ID MAG - TRK
2 - LENGTH 2 - 2 ft, 4 - 4 ft, 8 - 8 ft, X'-X" - Specify Length, PAT - Pattern (Consult Factory)
3 - COMPONENT UP - Uplight, NA - No Uplight (Track Only)
4 - COLOR TEMP 27 - 2700K/90 CRI, 30 - 3000K/90 CRI, 35 - 3500K/90 CRI, 40 - 4000K/90 CRI
5 - LED SYSTEM (Uplight) LTG1 - Standard, LTG2 - Low, LTG3 - High, LTGC - Custom Output
6 - VOLTAGE UNV - Universal (120/277V)

7 - DRIVER (Uplight) DB - Standard Dimming (0-10V), DB1% - 1% Dimming (0-10V), DB.1% - 0.1% Dimming (0-10V)
8 - DRIVER CKT1 (Track) DR30 - 30W Driver, DR60 - 60W Driver, DR90 - 90W Driver
9 - DRIVER CKT2 (Track) DR30 - 30W Driver, DR60 - 60W Driver, DR90 - 90W Driver
10 - FINISH BLK* - Black (Standard), CC - Custom Color (provide RAL#)
11 - MOUNTING AC - Air Craft Cable (50"), SM* - Surface Mount
*Interior finish comes standard black, custom colors available. Consult factory. *Not available with uplight component

DATE

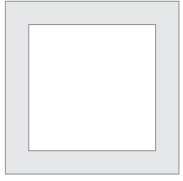
PROJECT

FIRM

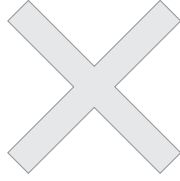
TYPE

PATTERNS

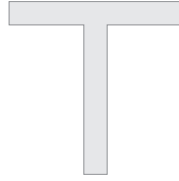
Patterns feature illuminated corners and angles. **Must consult factory for custom corners and patterns.**



Square Patterns



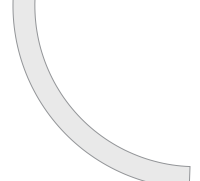
X Patterns



T Patterns



Custom Angles

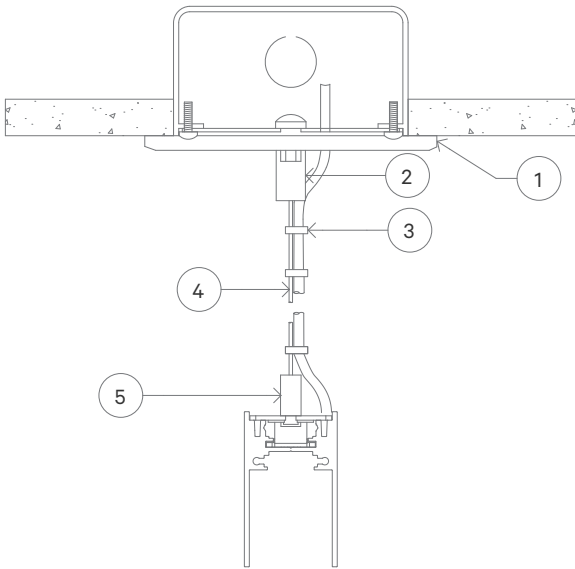


90° Curves

*17.5" Radius

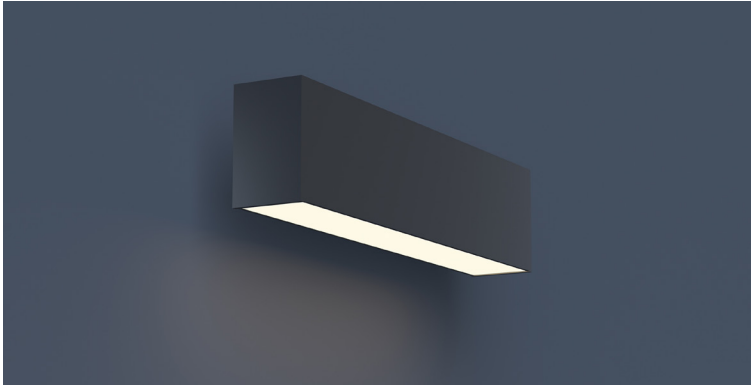
MOUNTING OPTIONS

AC - Air Craft Cable (50")



- 1 - Canopy
- 2 - Canopy Retainer
- 3 - SJT Cord
- 4 - Air Craft Cable
- 5 - Gripper


DATE _____ PROJECT _____ FIRM _____ TYPE _____



Magneto linear module. Connects to Magneto low voltage track to provide linear downlighting. Optional BLACK OPTIC that allows the unilluminated fixture to seamlessly blend in to dark environments and delivers full illumination when switched on.

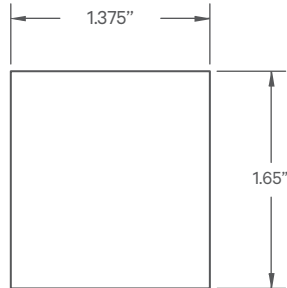
FEATURES

- Magnetically Held Fixture Designed to Be Easily Repositioned in Magneto Track On Site
- Optional BLACK OPTIC
- Available in Lengths Up To 8' (6" Increments)
- CRI 90+ Standard; R9>50
- 5 Year, 50,000 Hour Fixture Warranty
- 2700K, 3000K, 3500K & 4000K Color Temperatures Available

APPLICATIONS	Commercial Interiors, Galleries, Retail, Museums, Reception Areas, Hotels, Restaurants		
CONSTRUCTION	Extruded and Cast Aluminum Components	OPTICS	Extruded High Transmission Satin Acrylic Lens with No LED Imaging. BLACK OPTIC Optional.
WARRANTY	5 Year Limited Warranty (Covers Standard Components)	FINISH	Powder-Coated Black Standard. Optional White Powder-Coated Finish. Custom RAL Colors Available
FIXTURE RATINGS & CERTIFICATIONS	Union Made ETL Listed	Made In The USA Damp Location Rated	 DRIVERS For Wiring Diagrams Click Here
ELECTRICAL	Powered by Magneto Track System. 0-10V Dimmable. 'Flip' Fixture in Track to Select Circuit		



EXTRUSION DIMENSIONS



LED SYSTEM INFORMATION

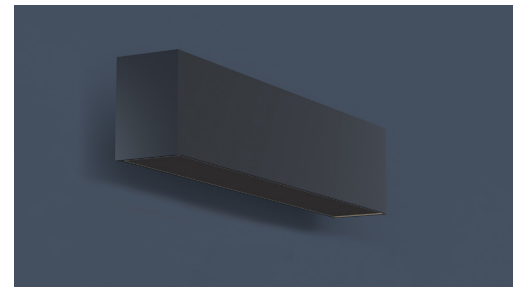
	Nominal System Watts	Nominal Delivered Lumens
Standard (LTG1)	8 W/ft	500 lm/ft
Low (LTG2)	4.5 W/ft	280 lm/ft
High (LTG3)	13 W/ft	650 lm/ft

NOTE: Based on a 3500K luminaire

ORDERING



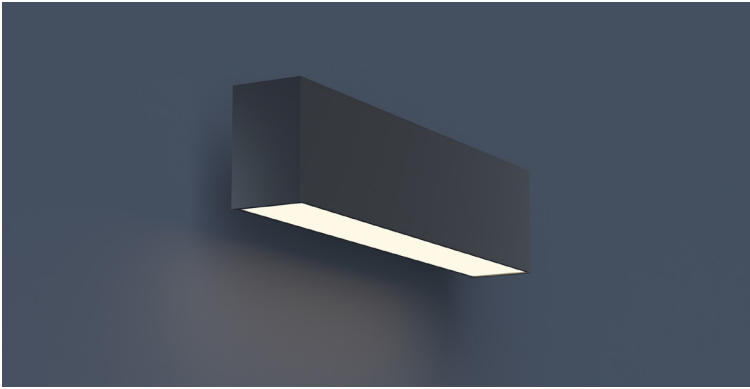
1 - FIXTURE ID MAG - LIN	2 - LENGTH 2 - 2 ft 4 - 4 ft 8 - 8 ft X'-X" - Specify Length (Maximum Length 8ft, Specify to the Nearest 6")	3 - COLOR TEMP 27 - 2700K/90 CRI 30 - 3000K/90 CRI 35 - 3500K/90 CRI 40 - 4000K/90 CRI	4 - LED SYSTEM LTG1 - Standard LTG2 - Low LTG3 - High
5 - FINISH BLK - Black (Standard) W - White CC - Custom Color (provide RAL#)	6 - OPTICS SD - Standard Diffuser BKO™ - BLACK OPTIC	7 - EMERGENCY EM 120V - Emergency Pack EM 277V - Emergency Pack EMCKT - Emergency Circuit *NOTE: EM sections are fixed in position at the factory by code and must be marked on submittal drawings. EM not available with Black Optic.	



Shown with optional BLACK OPTIC

Updated: 07/22/2020

DATE _____ PROJECT _____ FIRM _____ TYPE _____



Magneto linear module with specially formulated wall wash optic. Connects to Magneto low voltage track to provide linear downlighting.

FEATURES

- Magnetically Held Fixture Designed to Be Easily Repositioned in Magneto Track On Site
- Available in Lengths Up To 8' (6" Increments)
- CRI 90+ Standard; R9>50
- 5 Year, 50,000 Hour Fixture Warranty
- 2700K, 3000K, 3500K & 4000K Color Temperatures Available
- 0-10V Dimmable

APPLICATIONS

Commercial Interiors, Galleries, Retail, Museums, Reception Areas, Hotels, Restaurants

CONSTRUCTION

Extruded and Cast Aluminum Components

OPTICS

Specially Formulated Ribbed Lens for Wall Washing Effect with Minimal LED Imaging.

WARRANTY

5 Year Limited Warranty (Covers Standard Components)

FINISH

Powder-Coated Black Standard. Optional White Powder-Coated Finish. Custom RAL Colors Available

FIXTURE RATINGS & CERTIFICATIONS

Union Made ETL Listed Made In The USA Damp Location Rated



DRIVERS

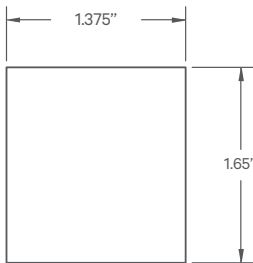
For Wiring Diagrams Click [Here](#)



ELECTRICAL

Powered by Magneto Track System. 0-10V Dimmable. 'Flip' Fixture in Track to Select Circuit

EXTRUSION DIMENSIONS

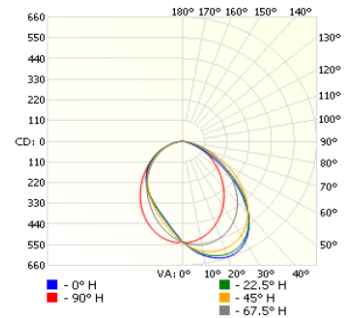


LED SYSTEM INFORMATION

	Nominal System Watts	Nominal Delivered Lumens
Standard (LTG1)	8 W/ft	330 lm/ft
Low (LTG2)	4.5 W/ft	185 lm/ft
High (LTG3)	13 W/ft	435 lm/ft

NOTE: Based on a 3500K luminaire

CANDELA



ORDERING



1 - FIXTURE ID

MAG - WW

2 - LENGTH

2 - 2 ft
4 - 4 ft
8 - 8 ft
X'-X" - Specify Length (Maximum Length 8ft, Specify to the Nearest 6")

3 - COLOR TEMP

27 - 2700K/90 CRI
30 - 3000K/90 CRI
35 - 3500K/90 CRI
40 - 4000K/90 CRI

4 - LED SYSTEM

LTG1 - Standard
LTG2 - Low
LTG3 - High

5 - FINISH

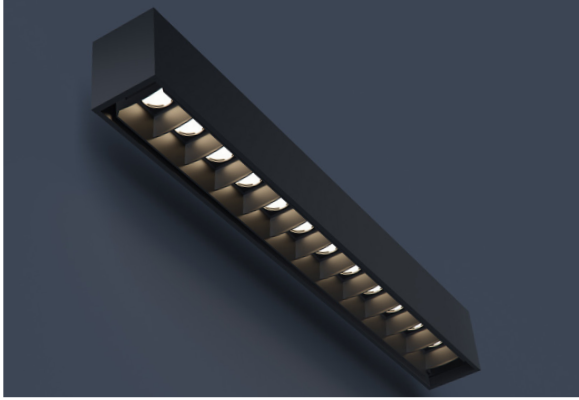
BLK - Black (Standard)
W - White
CC - Custom Color (provide RAL#)

6 - EMERGENCY

EM 120V - Emergency Pack
EM 277V - Emergency Pack
EMCKT - Emergency Circuit

*NOTE: EM sections are fixed in position at the factory by code and must be marked on submittal drawings. EM not available with Black Optic.


DATE _____ PROJECT _____ FIRM _____ TYPE _____



Magneto linear baffle module. Connects to Magneto low voltage track to provide linear downlighting.

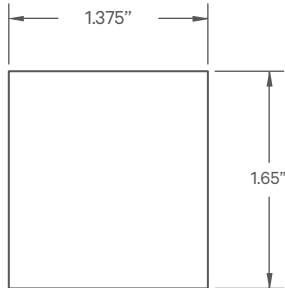
FEATURES

- Magnetically Held Fixture Designed to Be Easily Repositioned in Magneto Track On Site
- Specifiable Optic Packages
- CRI 90+ Standard; R9>50
- Available In Custom Lengths Up To 8' (1 Foot Increments)
- 5 Year, 50,000 Hour Fixture Warranty
- 2700K, 3000K, 3500K & 4000K Color Temperatures Available

APPLICATIONS	Commercial Interiors, Galleries, Retail, Museums, Reception Areas, Hotels, Restaurants		
CONSTRUCTION	Extruded and Cast Aluminum Components. Injection Molded Poly-Carbonate Baffle	OPTICS	Optic Per LED; Various Beam Spreads Available. See Below
WARRANTY	5 Year Limited Warranty (Covers Standard Components)	FINISH	Powder-Coated Black Standard. Custom RAL Colors Available for Housing Only (Baffle Only Available in Black)
FIXTURE RATINGS & CERTIFICATIONS	Union Made ETL Listed	Made In The USA Damp Location Rated	 DRIVERS For Wiring Diagrams Click Here
ELECTRICAL	Powered by Magneto Track System. 0-10V Dimmable. 'Flip' Fixture in Track to Select Circuit		



EXTRUSION DIMENSIONS



LED SYSTEM INFORMATION

	System Watts	Delivered Lumens	Efficacy
Standard (LTG1)	3 W/ft	303 lm/ft	110 LPW

*Based on 'WFL' option

BEAM SPREAD INFORMATION

	SP	FL	WFL
CBCP	5816	4122	3116

ORDERING



1 - FIXTURE ID MAG - BAF	2 - LENGTH 1' - 1 ft 2' - 2 ft 3' - 3 ft 4' - 4 ft 6' - 6 ft 8' - 8 ft X' - Specify Length (To the nearest 1ft)	3 - COLOR TEMP 27 - 2700K/90 CRI 30 - 3000K/90 CRI 35 - 3500K/90 CRI 40 - 4000K/90 CRI	4 - LED SYSTEM LTG1 - Standard	5 - FINISH BLK - Black (Standard) W - White CC - Custom Color (provide RAL#)
6 - FINISH (Baffle) BLK - Black	7 - BEAM SPREAD SP - 20° Beam; (Spot) FL - 26° Beam Spread; (Flood) WFL - 32° Beam Spread; (Wide Flood)			



DATE _____ PROJECT _____ FIRM _____ TYPE _____



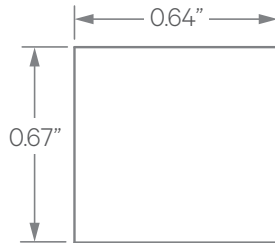
Slim, linear pendant module. Connects to Magneto low voltage track to provide linear downlighting.

FEATURES

- Magnetically Held Fixture Designed to Be Easily Repositioned in Magneto Track On Site
- 3" 'Drop Below' Pendant Stems on Either End of the Fixture.
- Adapters Can be Connected to Two Tracks Simultaneously.
- Available up to 6ft in Length
- CRI 90+ Standard; R9>50
- Available In Custom Lengths Up To 8' (1 Foot Increments)
- 5 Year, 50,000 Hour Fixture Warranty

APPLICATIONS	Commercial Interiors, Galleries, Retail, Museums, Reception Areas, Hotels, Restaurants		
CONSTRUCTION	Extruded Aluminum Housing	OPTICS	Extruded High Transmission Satin Acrylic Lens with No LED Imaging
WARRANTY	5 Year Limited Warranty (Covers Standard Components)	FINISH	Powder-Coated Black Standard. Custom RAL Colors Available for Housing Only (Baffle Only Available in Black)
FIXTURE RATINGS & CERTIFICATIONS	Union Made ETL Listed	Made In The USA Damp Location Rated	 DRIVERS For Wiring Diagrams Click Here 
ELECTRICAL	Powered by Magneto Track System. 0-10V Dimmable. 'Flip' Fixture in Track to Select Circuit		

EXTRUSION DIMENSIONS



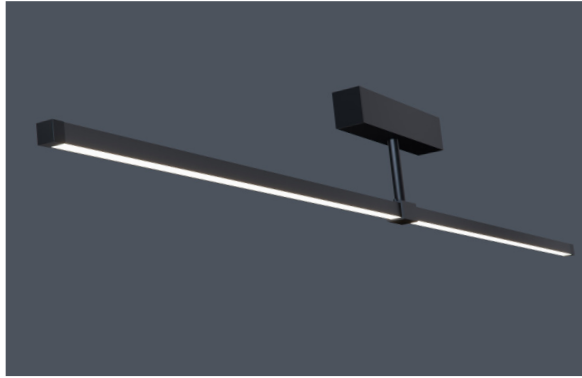
LED SYSTEM INFORMATION

	Nominal System Watts	Nominal Delivered Lumens
Standard (LTG1)	5 W/ft	175lm/ft
Low (LTG2)	3 W/ft	105lm/ft



1 - FIXTURE ID MAG - MYJ - EP	2 - LENGTH 1' - 1 ft 2' - 2 ft 3' - 3 ft 4' - 4 ft 6' - 6 ft	3 - COLOR TEMP 27 - 2700K/90 CRI 30 - 3000K/90 CRI 35 - 3500K/90 CRI 40 - 4000K/90 CRI	4 - LED SYSTEM LTG1 - Standard LTG2 - Low	5 - FINISH BLK - Black (Standard) W - White CC - Custom Color (provide RAL#)	6 - FINISH (Baffle) BLK - Black
---	--	---	--	--	---


DATE _____ PROJECT _____ FIRM _____ TYPE _____



Slim, linear pendant module. Connects to Magneto low voltage track to provide linear downlighting.

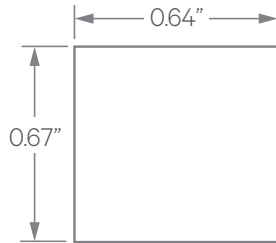
FEATURES

- Magnetically Held Fixture Designed to Be Easily Repositioned in Magneto Track On Site
- 3" 'Drop Below' Pendant Stem Connected to the Center of the Fixture
- Fixture has the Ability to Pivot Around the Center Axis (Field Adjustable)
- Available in 4ft Sections
- CRI 90+ Standard; R9>50
- Available In Custom Lengths Up To 8' (1 Foot Increments)
- 5 Year, 50,000 Hour Fixture Warranty
- 2700K, 3000K, 3500K & 4000K Color Temperatures Available

APPLICATIONS	Commercial Interiors, Galleries, Retail, Museums, Reception Areas, Hotels, Restaurants		
CONSTRUCTION	Extruded Aluminum Housing	OPTICS	Extruded High Transmission Satin Acrylic Lens with No LED Imaging
WARRANTY	5 Year Limited Warranty (Covers Standard Components)	FINISH	Powder-Coated Black Standard. Custom RAL Colors Available for Housing Only (Baffle Only Available in Black)
FIXTURE RATINGS & CERTIFICATIONS	Union Made ETL Listed	Made In The USA Damp Location Rated	
ELECTRICAL	Powered by Magneto Track System. 0-10V Dimmable. 'Flip' Fixture in Track to Select Circuit		DRIVERS For Wiring Diagrams Click Here



EXTRUSION DIMENSIONS



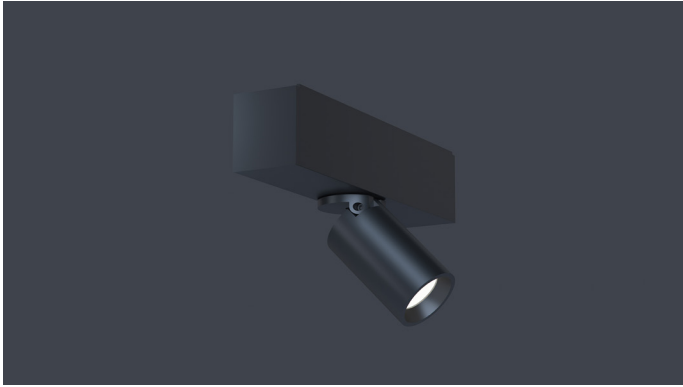
LED SYSTEM INFORMATION

	Nominal System Watts	Nominal Delivered Lumens
Standard (LTG1)	5 W/ft	175lm/ft
Low (LTG2)	3 W/ft	105lm/ft



1 - FIXTURE ID MAG - MYJ - CP	2 - LENGTH 4' - 4 ft	3 - COLOR TEMP 27 - 2700K/90 CRI 30 - 3000K/90 CRI 35 - 3500K/90 CRI 40 - 4000K/90 CRI	4 - LED SYSTEM LTG1 - Standard LTG2 - Low	5 - FINISH BLK - Black (Standard) W - White CC - Custom Color (provide RAL#)
---	--------------------------------	---	--	--


DATE _____ PROJECT _____ FIRM _____ TYPE _____



Small, magneto accent module. Connects to Magneto low voltage track to provide accent lighting.

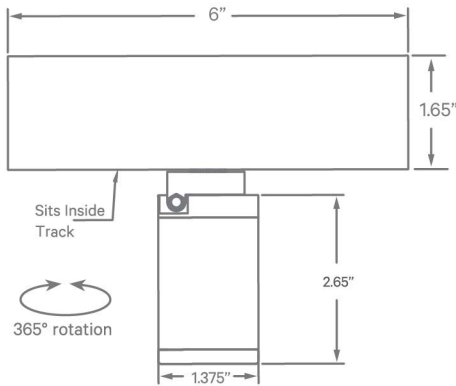
FEATURES

- Magnetically Held Fixture Designed to Be Easily Repositioned in Magneto Track On Site
- Three Beam Spreads Available
- CRI 90+ Standard; R9>50
- Glare Control Accessory Available
- Module is Dimmable Using a 0-10V Control Wired to the Magneto Track
- 2700K, 3000K, 3500K & 4000K Color Temperatures Available

APPLICATIONS	Commercial Interiors, Galleries, Retail, Museums, Reception Areas, Hotels, Restaurants		
CONSTRUCTION	Extruded and Cast Aluminum Components	OPTICS	Field Changeable Optic; Beam Angle of 24°, 27°, and 30° Available. Optional Hex Louver Available
WARRANTY	5 Year Limited Warranty (Covers Standard Components)	FINISH	Powder-Coated Black Standard. Optional White Powder-Coated Finish. Custom RAL Colors Available
FIXTURE RATINGS & CERTIFICATIONS	Union Made ETL Listed	Made In The USA Damp Location Rated	 DRIVERS For Wiring Diagrams Click Here
ELECTRICAL	Powered by Magneto Track System. 0-10V Dimmable. 'Flip' Fixture in Track to Select Circuit		



EXTRUSION DIMENSIONS



LED SYSTEM INFORMATION

	Nominal System Watts	Nominal Delivered Lumens
SM	5 W	328 lm

*Based on 'WFL' option in 3500K

ORDERING 1 2 3 4 5 6 7 8

1 - FIXTURE ID MAG - SPT	2 - SIZE SM	3 - COLOR TEMP 27 - 2700K/90 CRI 30 - 3000K/90 CRI 35 - 3500K/90 CRI 40 - 4000K/90 CRI	4 - LED SYSTEM LTG1 - Standard	5 - VOLTAGE UNV - Universal (120/277V)	6 - FINISH BLK - Black (Standard) W - White CC - Custom Color (provide RAL#))
------------------------------------	-----------------------	---	--	--	---

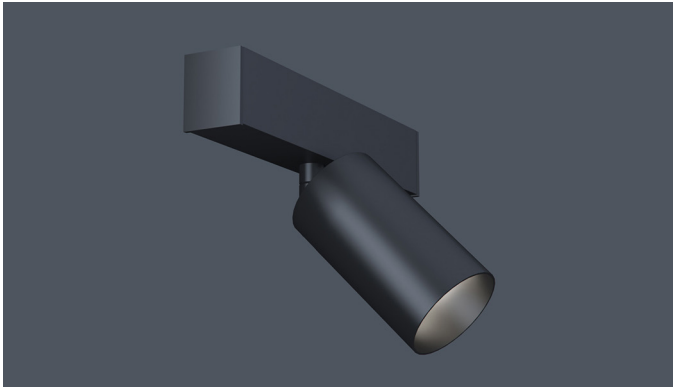
7 - BEAM SPREAD

SP - 24° Beam; 1754 CBCP
 FL - 27° Beam Spread; 1700 CBCP
 WFL - 30° Beam Spread; 994 CBCP

8 - OPTIONAL ACCESSORIES

HEX - Hex Louver


DATE _____ PROJECT _____ FIRM _____ TYPE _____



Magneto accent module. Connects to Magneto low voltage track to provide accent lighting.

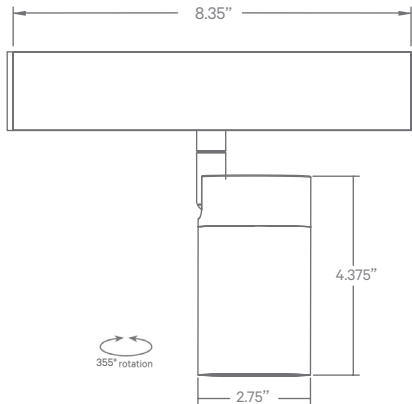
FEATURES

- Magnetically Held Fixture Designed to Be Easily Repositioned in Magneto Track On Site
- Three Beam Spreads Available
- CRI 90+ Standard; R9>50
- Glare Control Accessory Available
- Module is Dimmable Using a 0-10V Control Wired to the Magneto Track
- 2700K, 3000K, 3500K & 4000K Color Temperatures Available

APPLICATIONS	Commercial Interiors, Galleries, Retail, Museums, Reception Areas, Hotels, Restaurants		
CONSTRUCTION	Extruded and Cast Aluminum Components	OPTICS	Field Changeable Optic; Beam Angle of 15°, 38°, and 60° Available.
WARRANTY	5 Year Limited Warranty (Covers Standard Components)	FINISH	Powder-Coated Black Standard. Optional White Powder-Coated Finish. Custom RAL Colors Available
FIXTURE RATINGS & CERTIFICATIONS	Union Made ETL Listed	Made In The USA Damp Location Rated	
ELECTRICAL	Powered by Magneto Track System. 0-10V Dimmable. 'Flip' Fixture in Track to Select Circuit		DRIVERS For Wiring Diagrams Click Here



EXTRUSION DIMENSIONS



LED SYSTEM INFORMATION

	Nominal System Watts	Nominal Delivered Lumens
MED	8 W	340 lm

*Based on 'WFL' option in 3500K

BEAM SPREAD INFORMATION

	SP	FL	WFL
CBCP	3271	986	328

ORDERING



1 - FIXTURE ID

MAG - SPT

2 - SIZE

MED

3 - COLOR TEMP

- 27 - 2700K/90 CRI
- 30 - 3000K/90 CRI
- 35 - 3500K/90 CRI
- 40 - 4000K/90 CRI

4 - LED SYSTEM

LTG1 - Standard

5 - FINISH

- BLK - Black (Standard)
- W - White
- CC* - Custom Color (provide RAL#)

*Additional lead time

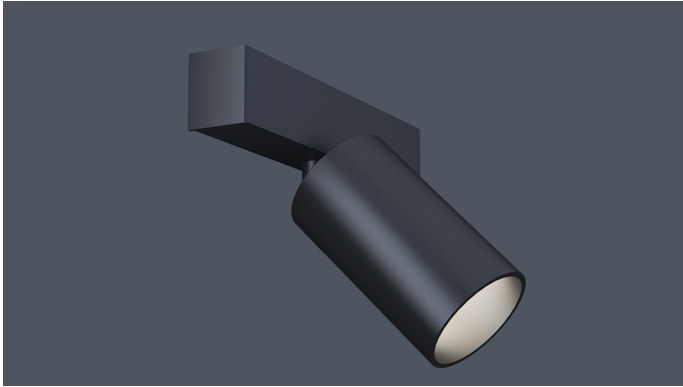
6 - BEAM SPREAD

- SP - 15° Beam; 3271 CBCP
- FL - 38° Beam Spread; 986 CBCP
- WFL - 60° Beam Spread; 328 CBCP

7 - OPTIONAL ACCESSORIES

- HEX - Hex Louver


DATE	PROJECT	FIRM	TYPE
------	---------	------	------



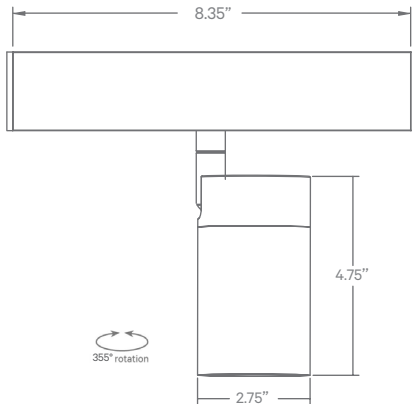
Magneto accent module. Connects to Magneto low voltage track to provide accent lighting.

FEATURES

- Magnetically Held Fixture Designed to Be Easily Repositioned in Magneto Track On Site
- Three Beam Spreads Available
- CRI 90+ Standard; R9>50
- Module is Dimmable Using a 0-10V Control Wired to the Magneto Track
- 2700K, 3000K, 3500K & 4000K Color Temperatures Available

APPLICATIONS	Commercial Interiors, Galleries, Retail, Museums, Reception Areas, Hotels, Restaurants		
CONSTRUCTION	Extruded and Cast Aluminum Components	OPTICS	Field Changeable Optic; Beam Angle of 15°, 24°, and 60° Available.
WARRANTY	5 Year Limited Warranty (Covers Standard Components)	FINISH	Powder-Coated Black Standard. Optional White Powder-Coated Finish. Custom RAL Colors Available
FIXTURE RATINGS & CERTIFICATIONS	Union Made Made In The USA Damp Location Rated	DRIVERS	 <p>For Wiring Diagrams Click Here</p>
ELECTRICAL	Powered by Magneto Track System. 0-10V Dimmable. 'Flip' Fixture in Track to Select Circuit		

EXTRUSION DIMENSIONS



LED SYSTEM INFORMATION

	Nominal System Watts	Nominal Delivered Lumens
LRG	14 W	670 lm

*Based on 'WFL' option in 3500K

BEAM SPREAD INFORMATION

	SP	FL	WFL
CBCP	2520	1641	904

ORDERING



1 - FIXTURE ID	2 - SIZE	3 - COLOR TEMP	4 - LED SYSTEM	5 - FINISH
MAG - SPT	LRG	27 - 2700K/90 CRI 30 - 3000K/90 CRI 35 - 3500K/90 CRI 40 - 4000K/90 CRI	LTG1 - Standard	BLK - Black (Standard) W - White CC* - Custom Color (provide RAL#) *Additional lead time

6 - BEAM SPREAD
SP - 15° Beam; 2520 CBCP FL - 24° Beam Spread; 1641 CPCP WFL - 60° Beam Spread; 904 CBCP

7 - OPTIONAL ACCESSORIES
HEX - Hex Louver

DATE _____ PROJECT _____ FIRM _____ TYPE _____



Pendant-style, adjustable accent module for MAGNETO track system. Available fixed or adjustable. Connects to Magneto low voltage track to provide accent lighting.

FEATURES

- Magnetically Held Fixture Designed to Be Easily Repositioned in Magneto Track On Site
- Three Beam Spreads Available
- CRI 90+ Standard; R9>50
- Module is Dimmable Using a 0-10V Control Wired to the Magneto Track
- 2700K, 3000K, 3500K & 4000K Color Temperatures Available
- Glare Control

APPLICATIONS Commercial Interiors, Galleries, Retail, Museums, Reception Areas, Hotels, Restaurants

CONSTRUCTION Extruded and Cast Aluminum Components | **OPTICS** Field Changeable Optic; Beam Angle of 15°, 38°, and 60° Available.

WARRANTY 5 Year Limited Warranty (Covers Standard Components) | **FINISH** Powder-Coated Black Standard. Optional White Powder-Coated Finish. Custom RAL Colors Available

FIXTURE RATINGS & CERTIFICATIONS Union Made Made In The USA Damp Location Rated

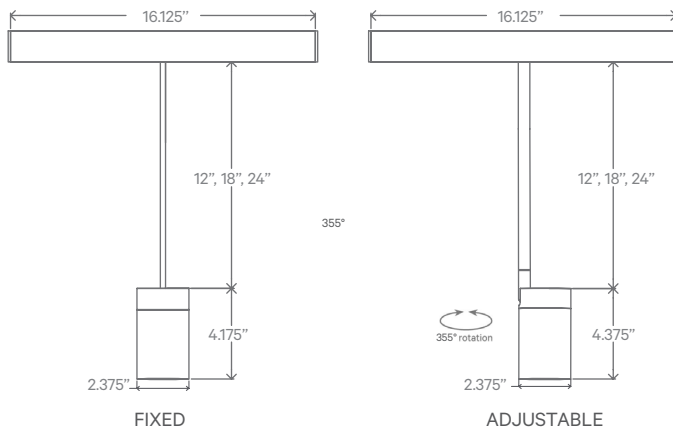


DRIVERS

For Wiring Diagrams Click [Here](#)

ELECTRICAL Powered by Magneto Track System. 0-10V Dimmable. 'Flip' Fixture in Track to Select Circuit

EXTRUSION DIMENSIONS



LED SYSTEM INFORMATION

	Nominal System Watts	Nominal Delivered Lumens
MED	8 W	340 lm

*Based on 'WFL' option in 3500K

BEAM SPREAD INFORMATION

	SP	FL	WFL
CBCP	3271	986	328

ORDERING



1 - FIXTURE ID

MAG - PEND

2 - SIZE

MED

3 - STYLE

FIX - Fixed
ADJ - Adjustable

4 - COLOR TEMP

27 - 2700K/90 CRI
30 - 3000K/90 CRI
35 - 3500K/90 CRI
40 - 4000K/90 CRI

5 - LED SYSTEM

LTG1 - Standard

6 - FINISH

BLK - Black (Standard)
W - White
CC* - Custom Color (provide RAL#)

7 - BEAM SPREAD

SP - 15° Beam; 3271 CBCP
FL - 38° Beam Spread; 986 CBCP
WFL - 60° Beam Spread; 328 CBCP

8 - PENDANT STEM

12"
18"
24"

9 - OPTIONAL ACCESSORIES

HEX - Hex Louver

*Additional lead time


DATE _____ PROJECT _____ FIRM _____ TYPE _____



Pendant-style, adjustable accent module for MAGNETO track system. Available fixed or adjustable. Connects to Magneto low voltage track to provide accent lighting.

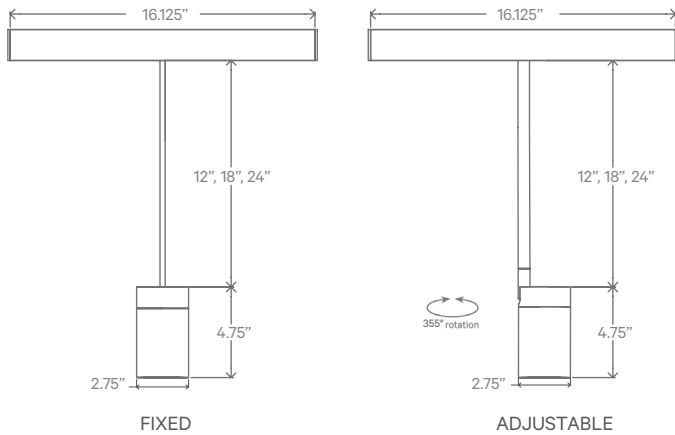
FEATURES

- Magnetically Held Fixture Designed to Be Easily Repositioned in Magneto Track On Site
- Three Beam Spreads Available
- CRI 90+ Standard; R9>50
- Glare Control Accessory Available
- Module is Dimmable Using a 0-10V Control Wired to the Magneto Track
- 2700K, 3000K, 3500K & 4000K Color Temperatures Available

APPLICATIONS	Commercial Interiors, Galleries, Retail, Museums, Reception Areas, Hotels, Restaurants		
CONSTRUCTION	Extruded and Cast Aluminum Components	OPTICS	Field Changeable Optic; Beam Angle of 15°, 24°, and 60° Available.
WARRANTY	5 Year Limited Warranty (Covers Standard Components)	FINISH	Powder-Coated Black Standard. Optional White Powder-Coated Finish. Custom RAL Colors Available
FIXTURE RATINGS & CERTIFICATIONS	Union Made ETL Listed	Made In The USA Damp Location Rated	
ELECTRICAL	Powered by Magneto Track System. 0-10V Dimmable. 'Flip' Fixture in Track to Select Circuit		DRIVERS For Wiring Diagrams Click Here



EXTRUSION DIMENSIONS



LED SYSTEM INFORMATION

	Nominal System Watts	Nominal Delivered Lumens
LRG	14 W	670 lm

*Based on 'WFL' option in 3500K

BEAM SPREAD INFORMATION

	SP	FL	WFL
CBCP	2520	1641	904

ORDERING



1 - FIXTURE ID

MAG - PEND

2 - SIZE

LRG

3 - STYLE

FIX - Fixed
ADJ - Adjustable

4 - COLOR TEMP

27 - 2700K/90 CRI
30 - 3000K/90 CRI
35 - 3500K/90 CRI
40 - 4000K/90 CRI

5 - LED SYSTEM

LTG1 - Standard

6 - FINISH

BLK - Black (Standard)
W - White
CC* - Custom Color
(provide RAL#)

7 - BEAM SPREAD

SP - 15° Beam; 2520 CBCP
FL - 24° Beam Spread; 1641 CPCP
WFL - 60° Beam Spread; 904 CBCP

8 - PENDANT STEM

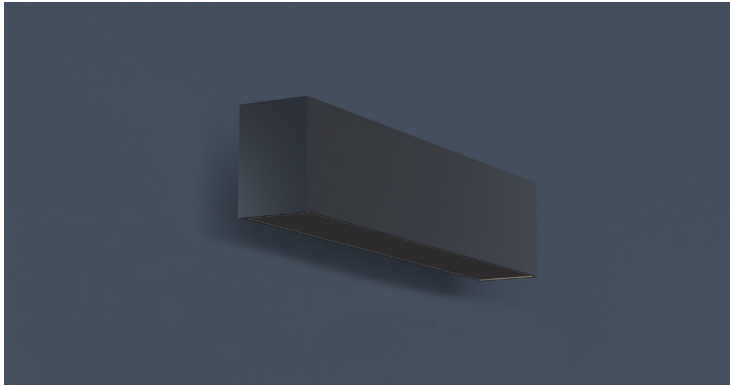
12"
18"
24"

9 - OPTIONAL ACCESSORIES

HEX - Hex Louver

*Additional lead time

DATE	PROJECT	FIRM	TYPE
------	---------	------	------



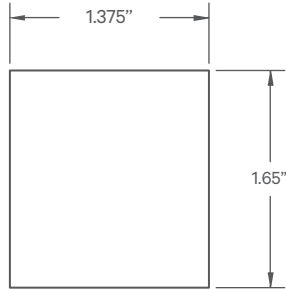
'Blank' linear component for Magneto track system, hiding the track and allowing for an even cleaner aesthetic.

FEATURES

- Magnetically Held Fixture Designed to Be Easily Repositioned in Magneto Track On Site
- Available in Lengths Up To 8' (6" Increments)
- 5 Year Warranty

APPLICATIONS	Commercial Interiors, Galleries, Retail, Museums, Reception Areas, Hotels, Restaurants		
CONSTRUCTION	Extruded and Cast Aluminum Components	OPTICS	N/A
WARRANTY	5 Year Limited Warranty	FINISH	Powder-Coated Black Standard. Optional White Powder-Coated Finish. Custom RAL Colors Available
FIXTURE RATINGS & CERTIFICATIONS	Union Made Made In The USA		
ELECTRICAL	N/A		

EXTRUSION DIMENSIONS



ORDERING



1 - FIXTURE ID

MAG - BLANK

2 - LENGTH

- 2 - 2 ft
- 4 - 4 ft
- 8 - 8 ft
- X'-X" - Specify Length
(Maximum Length 8ft,
Specify to the Nearest 6")

3 - FINISH

- BLK - Black (Standard)
- W - White
- CC - Custom Color
(provide RAL#)