



Prescot Train Station

Case Study



24W

IP68



Information

Client:	Prescot Train Station
Location:	Prescot, England - United Kingdom
Products Used:	MaxiPUNCH 102 Static

Technology



Environment:
Dry, damp and wet locations.



Power Output:
24VDC.



Watts:
2.4W per unit



Light Source:
CREE LED's white dies.

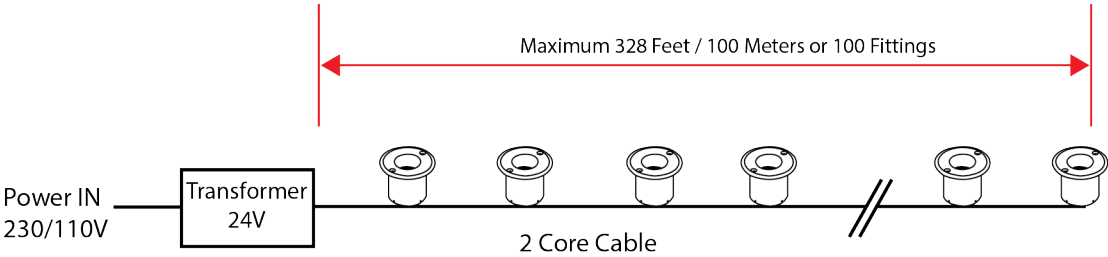


Cable/Run Lengths:
100 units per strand.
100m (328ft) maximum strand
length



Listings:
CE

MaxiLED wiring example



Background

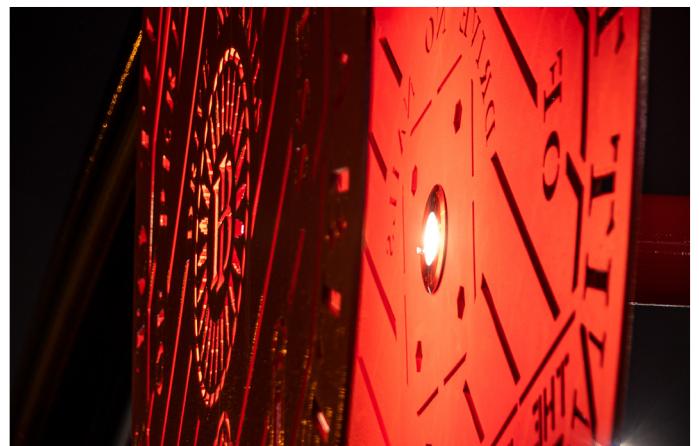
Nestled within the Borough of Knowsley in Merseyside, is the small town of Prescott. As part of a wider programme of works celebrating the townships of Knowsley Metropolitan Borough Council, four new eye-catching pieces of public art have been installed in Prescott. Their aim is to provide a warm welcome to the town, having been strategically placed on key gateway positions leading into and out of the town.



Design

The artwork has been funded by Metro Mayor Steve Rotheram and the Liverpool City Region Combined Authority through the Local Growth Fund. It was designed by artist Martin Herron following extensive consultation with the local community, as well as the involvement of two local primary schools, local residents and a number of local community organisations.

The fourth and final art installation is located at Prescott train station. This piece reflects Prescott's rich industrial history, including the crafts of watchmaking, pottery and mining.



MaxiLED

To illuminate the artwork during the hours of darkness, a custom-made solution from MaxiLED has been specified. Based on a MaxiDepth 102, the solution offers static white 4000K and a diffusing lens to fit into the artwork. The light source fixture has been carefully developed to offer a discreet solution, so viewers of the artwork see the installation and not the light fitting.

Other key partners in the project include Jo Dry of KMBC, SSE Contracting and Art Fabrications.



Prescot

The artwork is part of a wider connectivity strategy for Prescot, which has previously included the installation of bespoke inner gateway signs and new wayfaring signage across the town centre. The improvements to Prescot have all been made ahead of the opening of the Shakespeare North Playhouse in 2022, which is expected to draw thousands of new visitors to the town each year.



Visit us on:



Lighting and Illumination Technology Experience
Limited

Architectural



Unit 2, Farrington Place, Rossendale Road Ind. Est. Burnley, Lancashire. UK. BB11 5TY
T: 0845 8732 601 E: archsales@lite-ltd.co.uk W: www.lite-ltd.co.uk